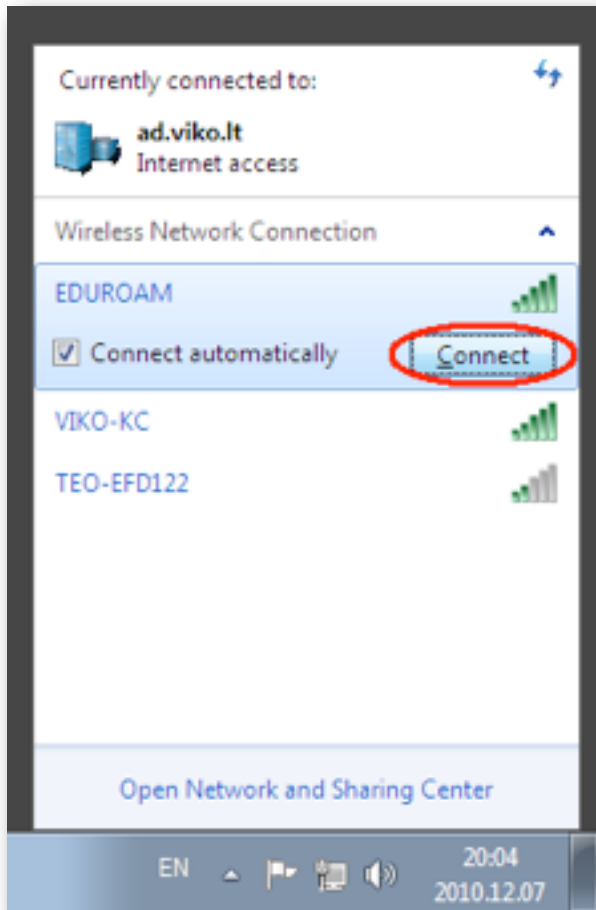
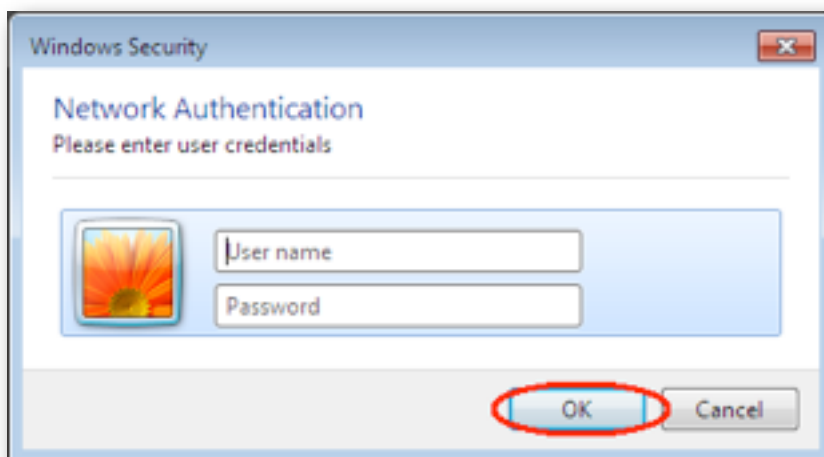


How to set up a “eduroam” wireless network for Windows 7

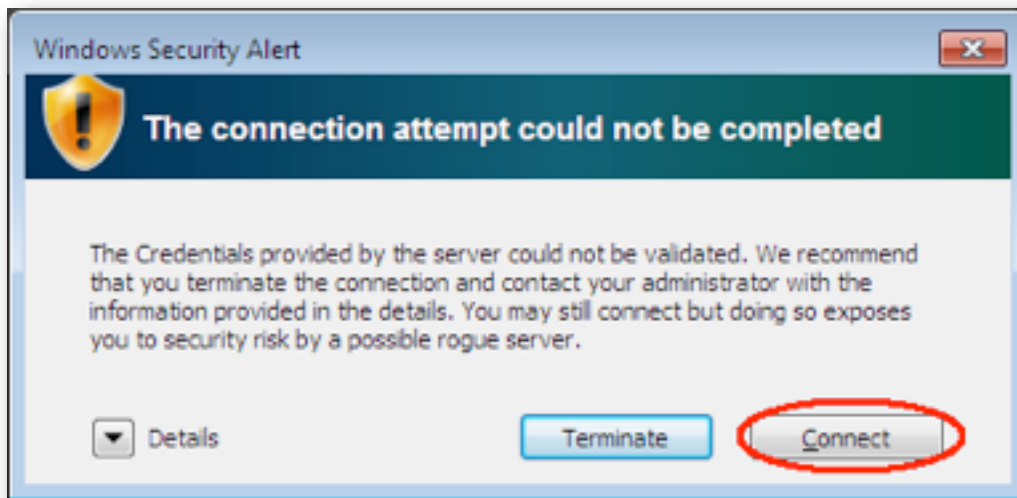
1. Choose a wireless network “eduroam” and press “Connect” button.



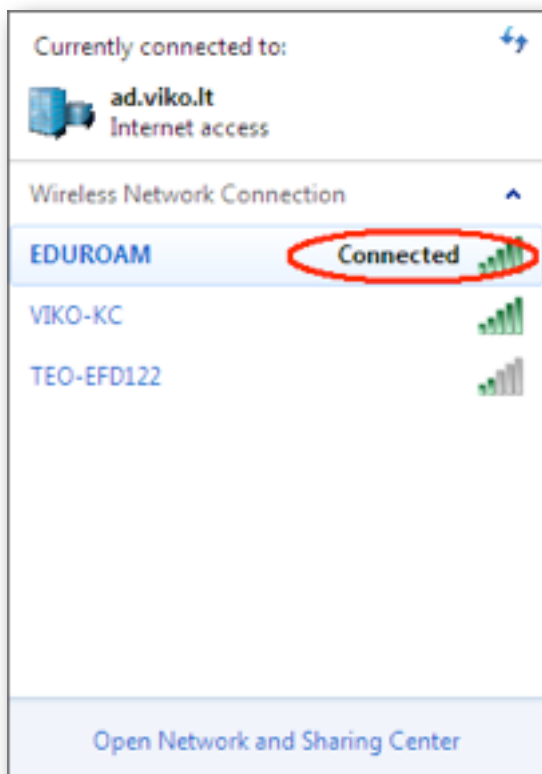
2. System instantly will ask you to enter your domain user and password (if you don't have or know your account name, please contact with us: <http://kc.viko.lt>). *Note: if your computer already registered in the “VKDC” controller, it will automatically connects to the following wireless network.*



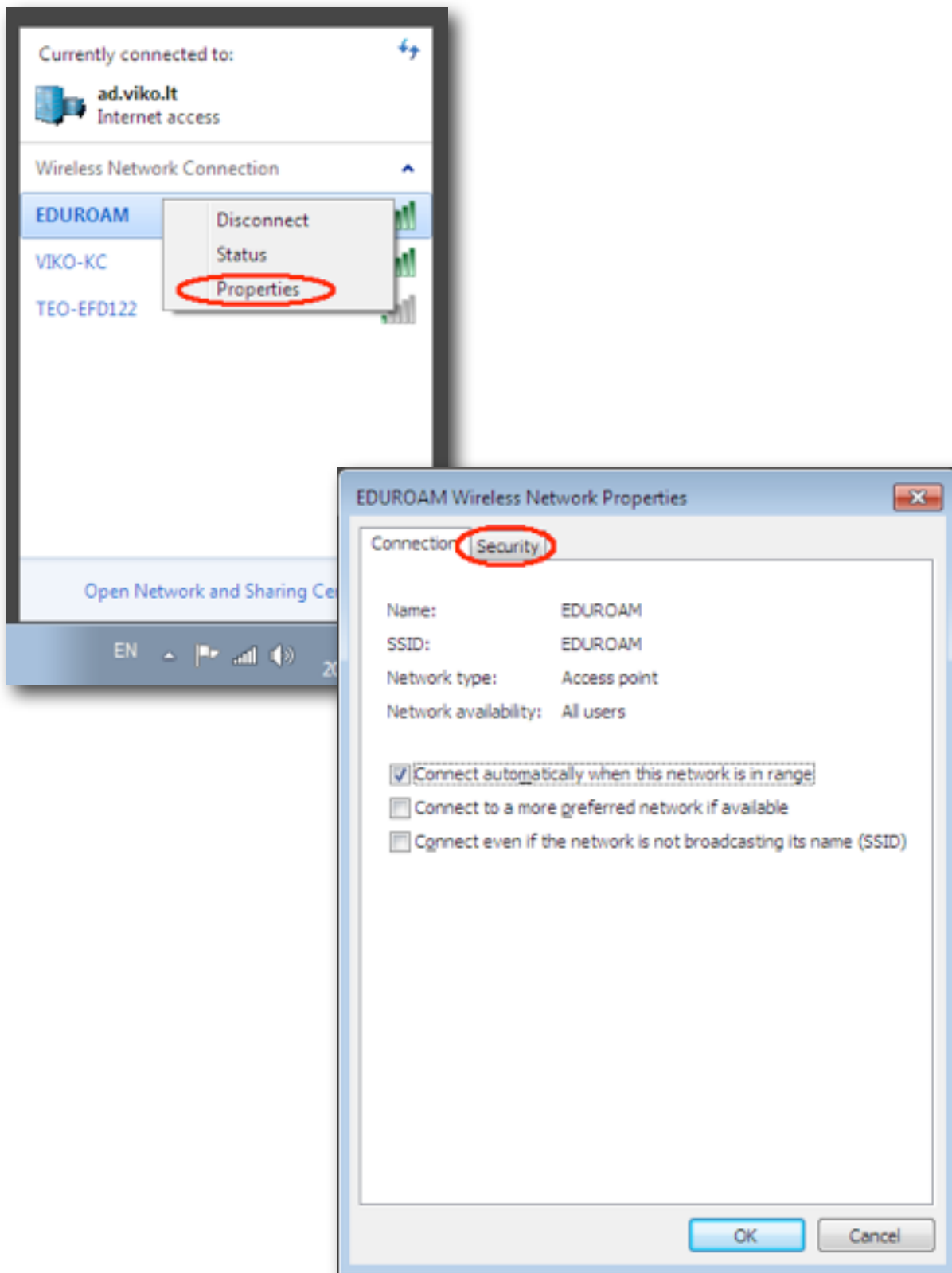
3. Will pop-up a Windows Security Alert, please click “Connect”.



4. If your credentials are valid, then you will see that status are changed to the “Connected” state.



5. Right mouse click on the wireless network “eduroam” and choose “Properties”, then go straight to the “Security” tab.



6. Make sure that all required settings are same as shown in the Fig. 6.1, then click “Settings”.

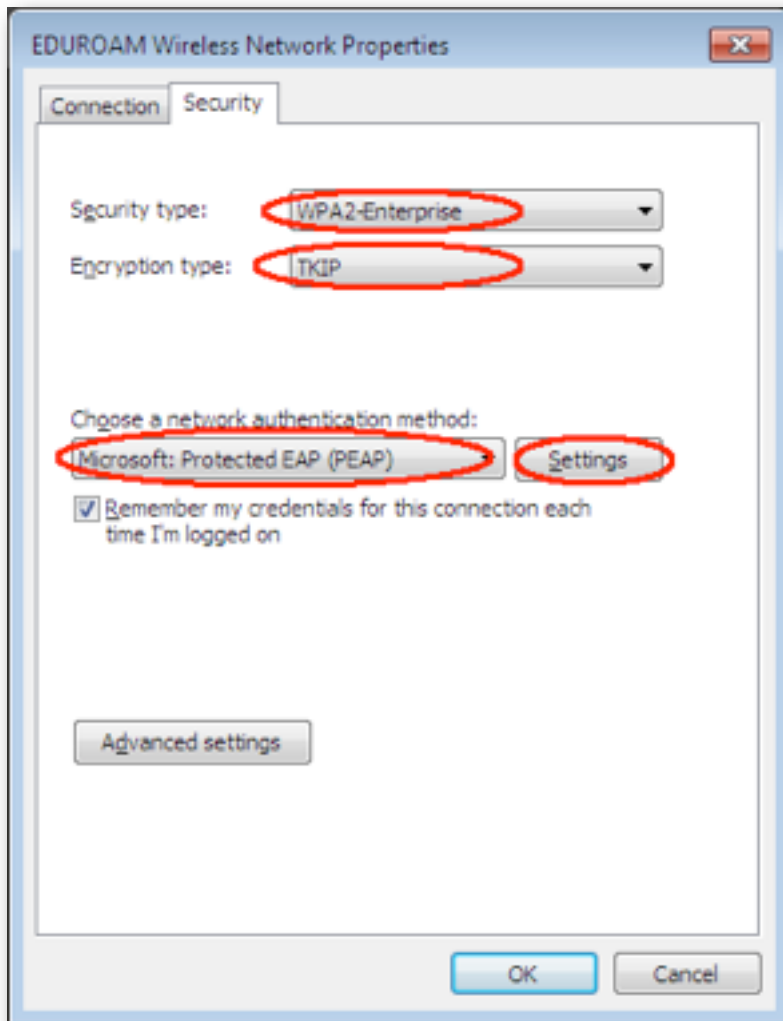


Fig. 6.1

7. Please tick all required options as shown in the Fig 7.1, then click “Configure..” and un tick option same as shown in the Fig 7.2. *Note: if your computer already registered in the VKDC domain, please tick option “Automatically use my Windows logon name and password”.*

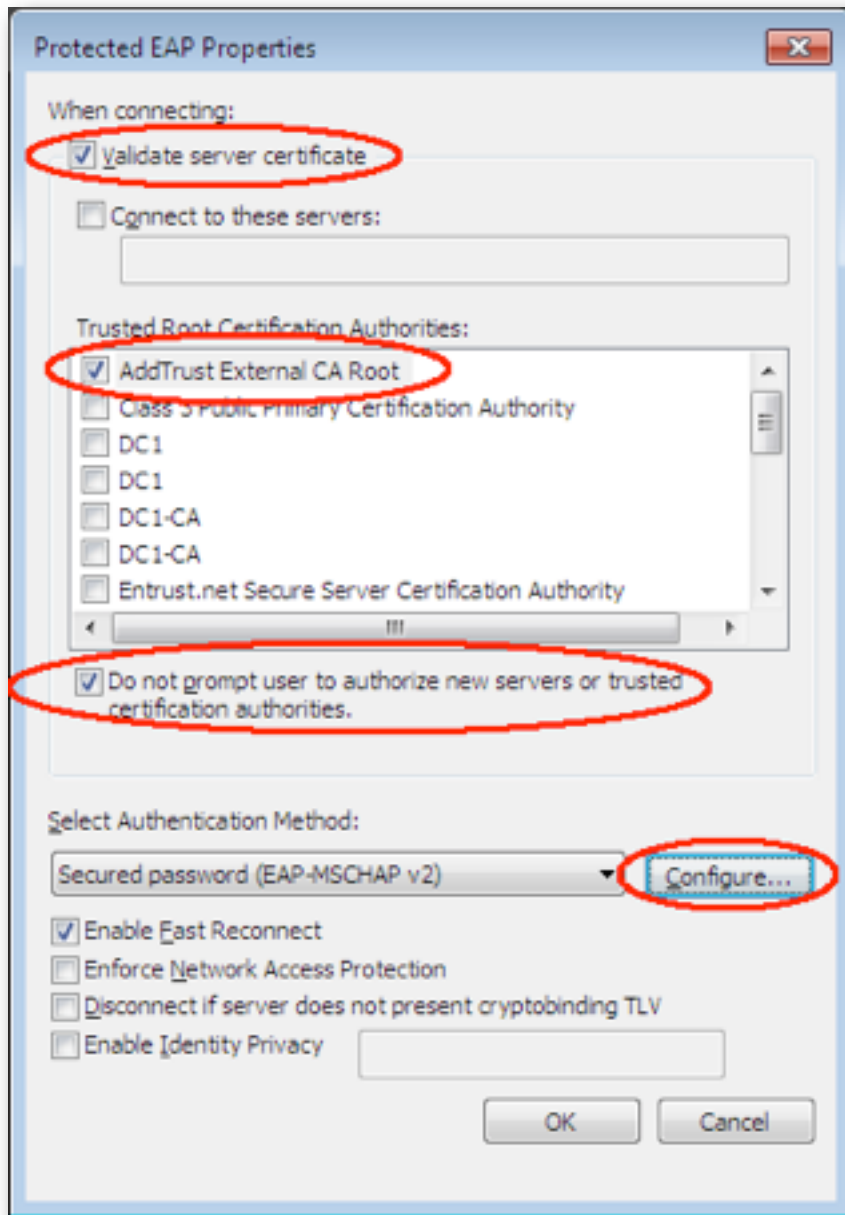


Fig 7.1

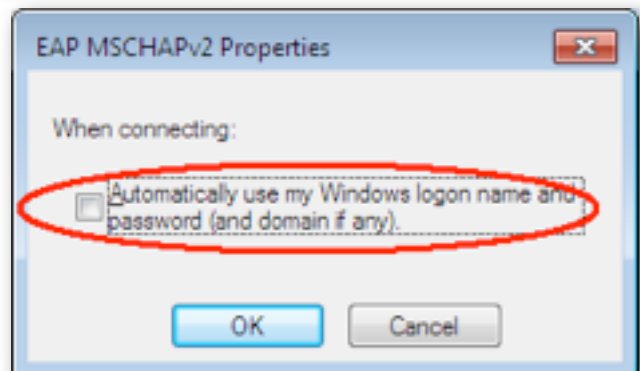


Fig 7.2

Congratulations you have successfully configured “eduroam” wireless network.

For more information, please visit our internet page: <http://kc.viko.lt>

Document rev. v0.1 (Wednesday, December 15, 2010)