

## Prerequisites

In order to connect to VIKO (Vilnius Kolegija) Vilnius college of Higher education wireless network you must fulfill these prerequisites:

1. A laptop with wireless adapter compatible with network - WPA2 protocol support is required.
2. Operating system Windows XP updated least till Service pack 3.

Check that – My Computer > Right mouse click >choose **Properties**



Fig. 1.2 Service pack version

If you do not have a Service pack 3 update on your computer, you have to connect to ordinary network via LAN cable and download necessary updates. To do that:

Open Internet explorer > tools > Windows update > follow the wizard

## In order to connect:

If your computer or your wireless network adapter did not come with its own wireless network software, follow these steps:

1. Click Start, click Run, type ncpa.cpl, and then click OK. You will get a window shown fig 2.1 :



Fig. 2.1 Network connections window

2. Double click wireless network connection.

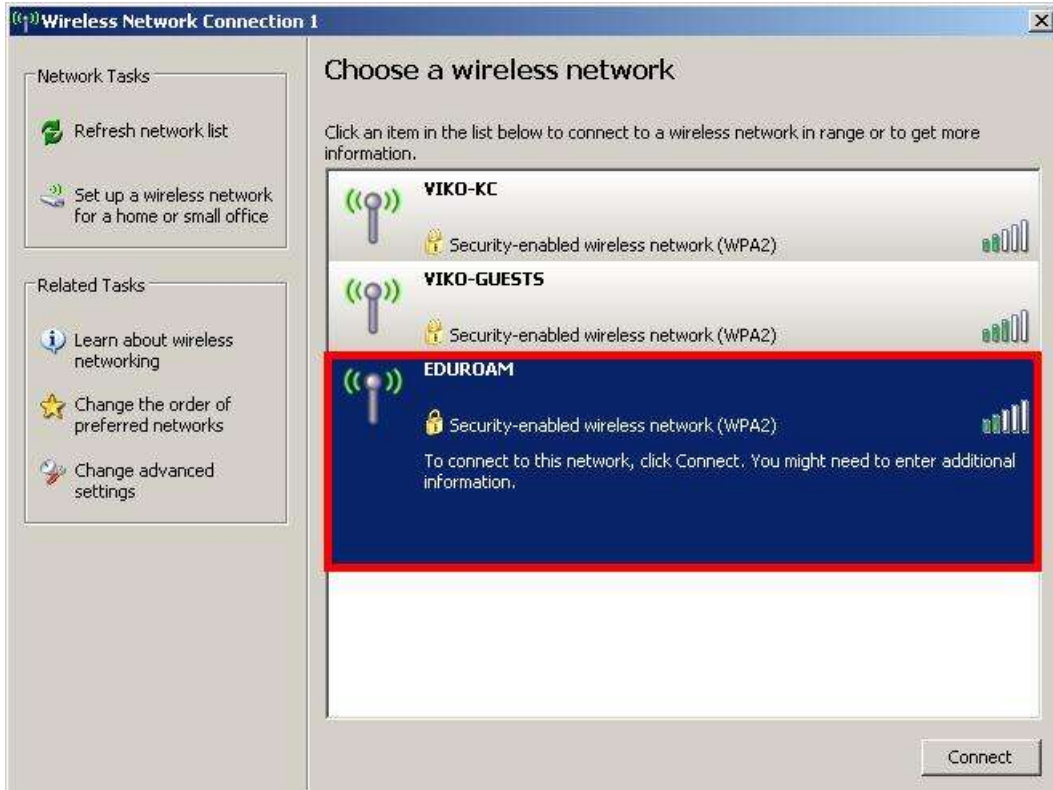


Fig. 2.2 EDUROAM connection

Try to connect EDUROAM. At the moment you will not be able to connect, this action is needed to acquire presets for current connection. Now disconnect from EDUROAM connection and click Change advanced settings Fig 2.3.

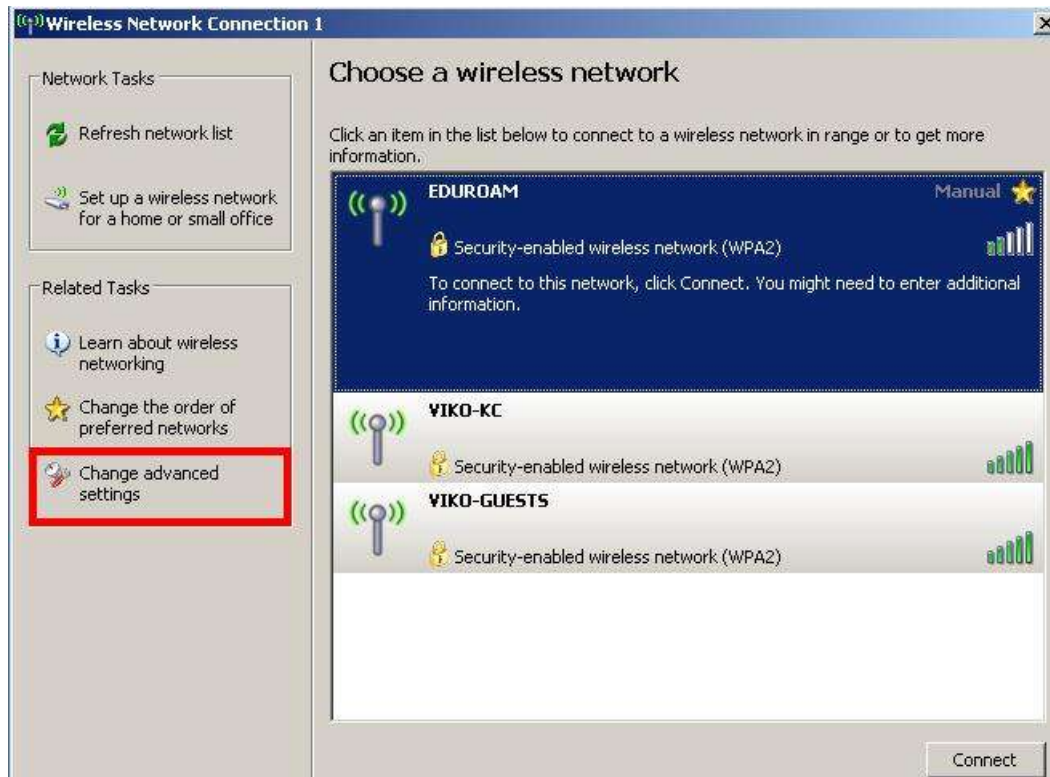


Fig 2.3 Change advanced settings

- 3. Click Wireless networks tab.

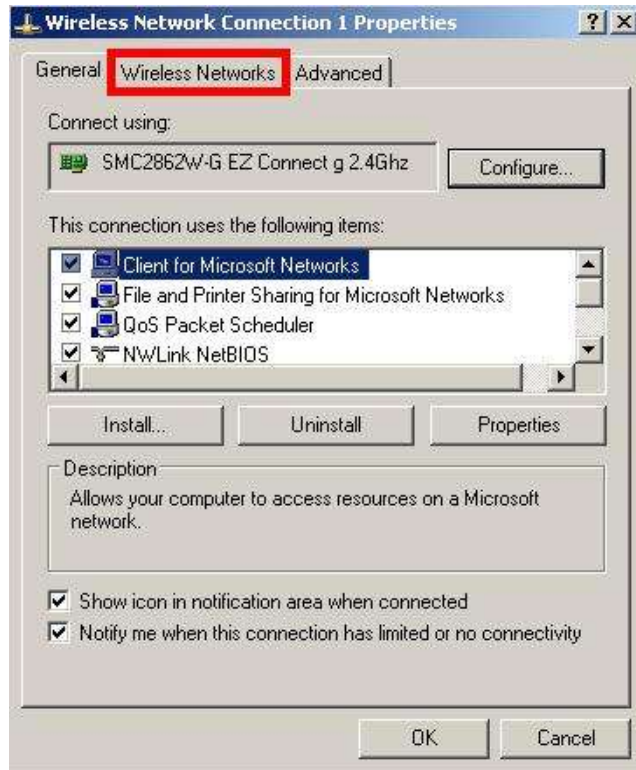


Fig 2.4 Wireless Networks tab

- 4. Select **EDUROAM** connection from preferred network list and click properties

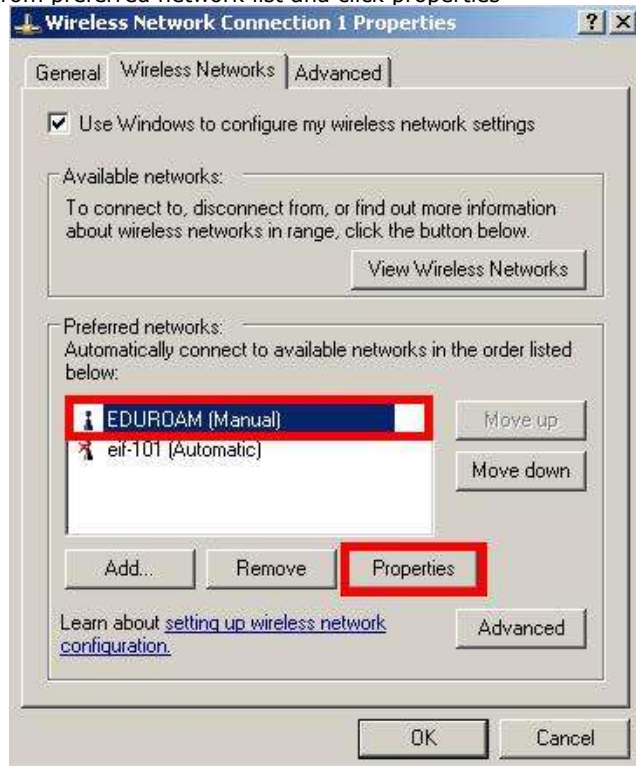


Fig 2.5 EDUROAM in the preferred network list.

5. In association tab make sure Network authentication is set to **WPA2** and data encryption **TKIP**, follow to **authentication** tab

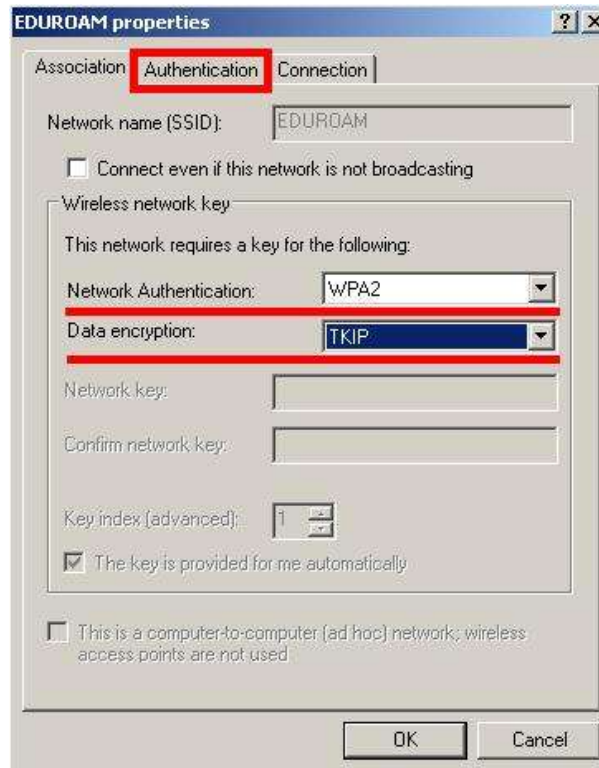


Fig 2.6 EDUROAM properties, association tab

6. In authentication tab, EAP type set to **Protected EAP (PEAP)** click properties

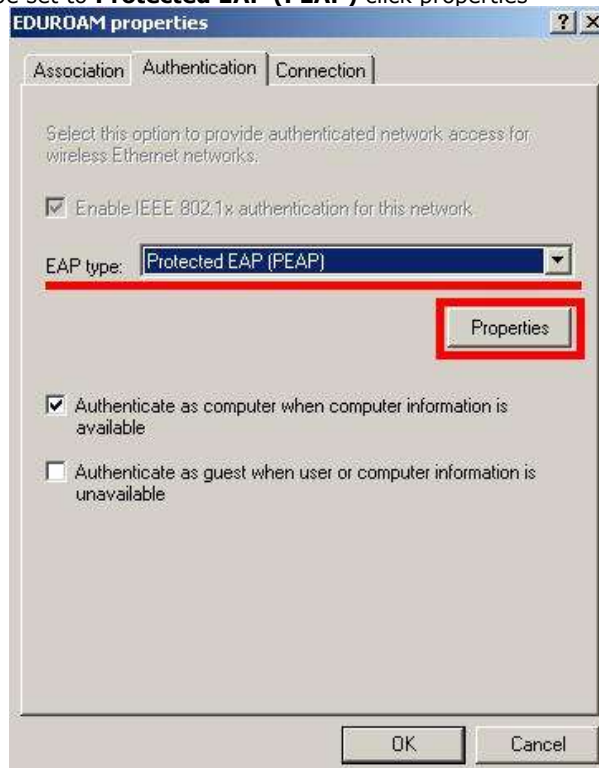


Fig 2.7 EDUROAM properties, authentication tab

- 7. EAP MCHAPv2 Properties, make sure that option in EAP MSCHAPv2 is **UNCHECKED**



Fig 2.8 EAP MSCHAPv2 properties

- 8. Accept and close all dialogs by pressing **OK**
- 9. Get back to wireless network connection screen and connect to EDUROAM network

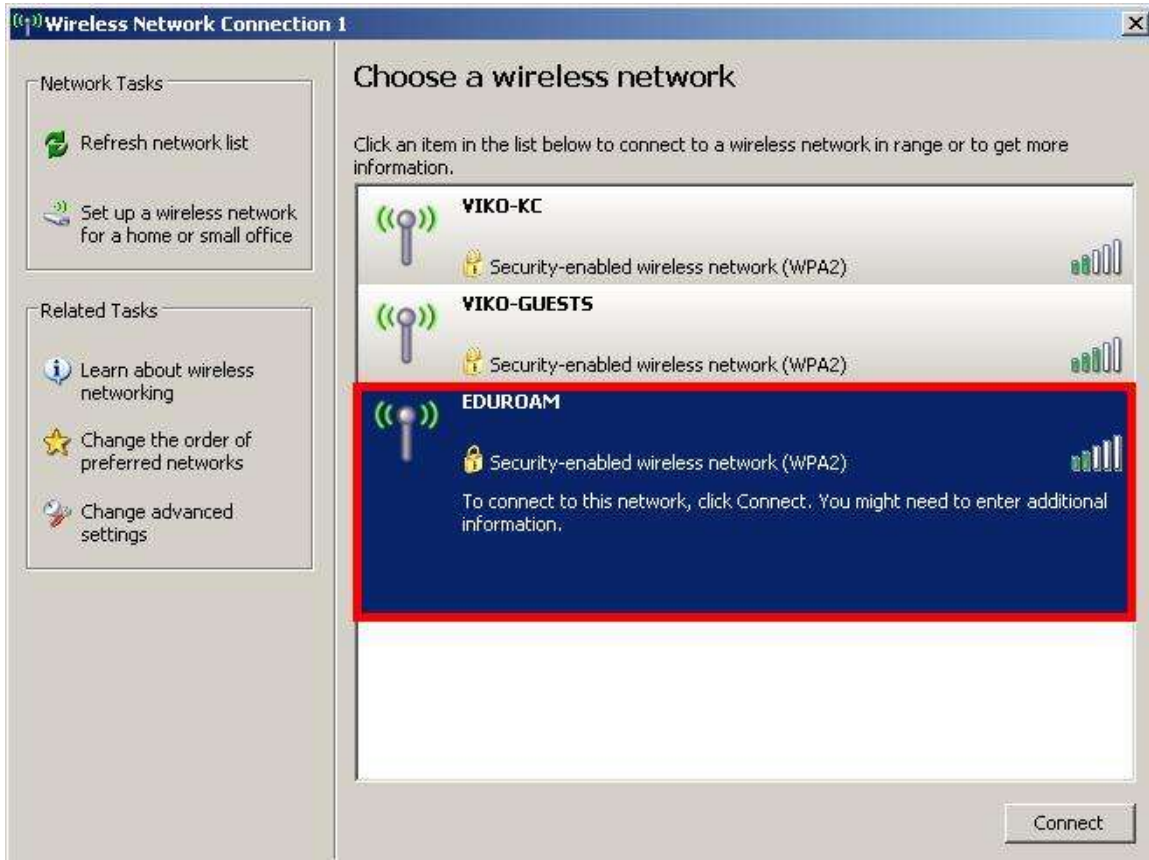


Fig 2.9 EDUROAM connection

- 10. Help balloon will pop up in bottom right corner of desktop requesting credentials



Fig 2.10 Credentials request balloon

- 11. Fill out the login form with earlier given credentials, user name and password logon domain leave blank



Fig 2.11 Login form

12. As soon as you fill out the form and press ok you are ready to use VIKO EDUROAM network